

# **Temperature frequency and mortality: assessing adaptation to local temperature**

## **Supplementary material**

### **Table of contents**

**Table S1. The descriptive statistics of locations included in the study.**

**Figure S1. Country-specific cumulative associations between temperature frequency and all-cause mortality.**

**Table S2. Percentage change of mortality comparing the 10<sup>th</sup> percentile to the 100<sup>th</sup> percentile of normalized frequency of temperature by climate zones.**

**Figure S2. Sensitivity analyses by using alternative maximum periods and degree of freedoms of temperature and long-term time trends.**

**Figure S3. Sensitivity analyses of pooled cumulative associations between temperature frequency and all-cause mortality for different periods.**

**Table S1. The descriptive statistics of locations included in the study.**

Country	Location	Start year	End year	Total deaths	Maximum annual average frequency of temperature	Most frequent temperature (°C)
Argentina	Buenos Aires	2005	2015	435125	22	22
Argentina	Cordoba	2005	2015	124430	24	21
Argentina	Rosario	2005	2015	126778	23	22
Australia	Adelaide	2010	2017	78091	32	12
Australia	Brisbane	2010	2017	100564	35	24
Australia	Melbourne	2010	2017	200603	33	12
Australia	Perth	2010	2017	84266	32	16
Australia	Sydney	2010	2017	219949	30	20
Brazil	Belo Horizonte	1997	2018	379803	56	23
Brazil	Brasilia	1997	2018	184649	86	22
Brazil	Caratinga	1997	2018	14058	55	24
Brazil	Curitiba	1997	2018	233270	36	20
Brazil	Divinopolis	1997	2018	32110	58	23
Brazil	Londrina	1997	2018	84797	52	24
Brazil	Maceio	1997	2018	149087	131	26
Brazil	Palmas	1997	2018	20660	95	26
Brazil	Porto Alegre	1997	2018	320539	29	22
Brazil	Rio Branco	1997	2018	35765	112	26
Brazil	Salvador	1997	2018	338403	109	26
Brazil	Santa Maria	1997	2018	47520	28	24
Brazil	Sao Luis	2016	2018	24596	200	27
Brazil	Sao Paulo	2010	2018	682147	44	22
Brazil	Sao Paulo	1997	2008	773758	44	22
Brazil	Teresopolis	1997	2018	26044	40	20
Brazil	Vitoria	1997	2013	58554	64	26
Canada	Abbotsford	1996	2015	41313	26	4
Canada	Calgary	1986	2015	159849	15	15
Canada	Edmonton	1986	2015	187584	16	15
Canada	Halifax	1986	2015	83065	17	18
Canada	Hamilton	1986	2015	125351	16	20
Canada	Kingston	1986	2015	53406	15	21
Canada	Kitchener-Waterloo	1986	2015	82089	14	17
Canada	London Ontario	1986	2015	104787	16	20
Canada	Montreal	1986	2015	456338	15	20
Canada	Niagara	1986	2015	116128	16	20
Canada	Oakville	1986	2015	71031	15	20
Canada	Oshawa	1986	2015	87981	15	19
Canada	Ottawa	1986	2015	179791	14	18
Canada	Regina	1986	2015	57373	13	17
Canada	Saint John NB	1986	2015	51071	23	16
Canada	Sarnia	1986	2015	33723	15	21
Canada	Saskatoon	1986	2015	66394	13	17
Canada	Sault Ste. Marie	1986	2015	34140	14	17
Canada	St. John's NFL	1986	2015	64098	19	1
Canada	Sudbury	1986	2015	46839	14	18
Canada	Thunder Bay	1986	2015	41202	13	15
Canada	Toronto	1986	2015	820873	14	20
Canada	Vancouver	1986	2015	383017	26	6
Canada	Victoria	1986	2015	96954	43	8
Canada	Windsor	1986	2015	86402	15	22
Canada	Winnipeg	1986	2015	195611	13	19
Chile	Chillan	2008	2014	8619	29	10
Chile	Santiago	2008	2014	254344	29	20
Chile	Temuco	2004	2013	16709	37	11
Chile	Valparaiso	2004	2013	45790	48	12

China	Anshan	2004	2006	30076	22	24
China	Beijing	2013	2015	87994	17	27
China	Fuzhou	2004	2006	17142	25	28
China	Guangzhou	2013	2015	48758	31	28
China	Hangzhou	2002	2004	21743	17	9
China	Hong Kong	1996	2002	213860	52	27
China	Lanzhou	2004	2008	33877	17	19
China	Shanghai	2001	2004	172940	17	23
China	Shanghai	2013	2015	114788	17	23
China	Shenyang	2005	2008	96588	16	23
China	Suzhu	2005	2008	49633	19	23
China	Taiyuan	2004	2008	43771	16	20
China	Tianjin	2005	2008	15857	21	27
China	Wuhan	2003	2005	62440	17	21
China	Wulumuqi	2006	2007	12281	17	20
China	Xian	2004	2008	47415	19	25
Colombia	Barranquilla	1998	2013	91624	158	27
Colombia	Bogota	1998	2013	426297	129	15
Colombia	Cali	1998	2013	188960	153	22
Colombia	Cartagena	1998	2013	53115	164	27
Colombia	Medellin	1998	2013	196543	157	17
Costa Rica	San José (CR)	2000	2017	31117	155	22
Czech Republic	Brno	1994	2015	89309	16	14
Czech Republic	Ostrava	1994	2015	77195	17	15
Czech Republic	Prague	1994	2015	287518	16	13
Czech Republic	South Bohemia	1994	2015	257888	17	14
Ecuador	Guayaquil	2014	2018	67731	97	26
Ecuador	Quito	2014	2018	44533	129	13
Estonia	Kohtla-Järve linn	1997	2018	17370	18	0
Estonia	Narva linn	1997	2018	17630	18	2
Estonia	Pärnu linn	1997	2018	14011	19	1
Estonia	Tallinn	1997	2018	96929	18	2
Estonia	Tartu linn	1997	2018	21812	18	1
Finland	Helsinki	1994	2014	153308	17	1
France	Bordeaux	2000	2015	78288	22	18
France	Clermont-Ferrand	2000	2015	35508	20	15
France	Dijon	2000	2015	28055	19	17
France	Grenoble	2000	2015	48728	18	13
France	Le Havre	2000	2015	35560	27	16
France	Lens-Douai	2000	2015	53428	24	15
France	Lille	2000	2015	132013	24	15
France	Lyon	2000	2015	112382	19	17
France	Marseille	2000	2015	137354	24	12
France	Montpellier	2000	2015	40341	24	12
France	Nancy	2000	2015	42648	20	17
France	Nantes	2000	2015	64879	24	17
France	Nice	2000	2015	75019	22	8
France	Paris	2000	2015	657707	21	16
France	Rennes	2000	2015	24723	25	10
France	Rouen	2000	2015	61557	24	16
France	Strasbourg	2000	2015	51657	18	15
France	Toulouse	2000	2015	73726	20	10
FranceCaribbean	Fort de France	2000	2015	19986	128	26
FranceCaribbean	Pointe a Pitre	2000	2015	26204	118	26
FranceGuiana	Cayenne	2000	2015	7110	154	26
FranceReunion	St Denis de la Reunion	2000	2015	13874	68	25
Germany	Berlin	1993	2015	811051	17	15
Germany	Bremen	1993	2015	150608	21	14
Germany	Dortmund	1993	2015	155233	20	14

Germany	Dresden	1993	2015	125866	17	15
Germany	Dusseldorf	1993	2015	160069	21	14
Germany	Frankfurt	1993	2015	168417	18	15
Germany	Hamburg	1993	2015	445338	20	14
Germany	Hannover	1993	2015	279125	19	15
Germany	Koeln	1993	2015	229457	20	14
Germany	Leipzig	1993	2015	152861	17	15
Germany	Muenchen	1993	2015	290962	18	13
Germany	Stuttgart	1993	2015	136878	18	16
Greece	Athens	2001	2010	287969	20	13
Guatemala	Guatemala	2009	2016	62715	88	22
Iran	Mashhad	2004	2013	121585	19	24
Iran	Tehran	2002	2015	696328	16	25
Ireland	East of Northern Ireland	1984	2007	216861	28	13
Ireland	NorthEast of the Republic of Ireland	1984	2007	114739	28	13
Ireland	NorthWest of the Republic of Ireland	1984	2007	74864	30	13
Ireland	SouthEast of Republic of Ireland	1984	2007	247197	30	9
Ireland	SouthWest of the Republic of Ireland	1984	2007	274069	31	8
Ireland	West of Northern Ireland	1984	2007	130485	28	13
Israel	Tel Aviv	1985	2020	350579	37	26
Italy	Bari	1996	2007	30526	25	13
Italy	Bologna	2006	2010	23824	15	25
Italy	Bologna	1996	2003	34209	15	25
Italy	Brescia	1993	1999	13561	19	6
Italy	Civitavecchia	1996	2006	3912	31	12
Italy	Frosinone	1995	2006	3537	18	7
Italy	Genoa	1999	2007	71214	21	18
Italy	Latina	1995	2006	7976	22	11
Italy	Palermo	1997	2001	26865	26	11
Italy	Rome	1987	2010	522179	20	12
Italy	Turin	1991	1999	69544	16	4
Italy	Viterbo	1995	2006	6286	19	11
Japan	Aichi	1979	2015	1655700	16	4
Japan	Akita	1979	2015	430855	17	2
Japan	Aomori	1979	2015	479172	15	20
Japan	Chiba	1979	2015	1348460	18	7
Japan	Ehime	1979	2015	510714	17	26
Japan	Fukui	1979	2015	257678	15	4
Japan	Fukuoka	1979	2015	1403500	15	7
Japan	Fukushima	1979	2015	680227	16	0
Japan	Gifu	1979	2015	603075	16	5
Japan	Gunma	1979	2015	591212	16	2
Japan	Hiroshima	1979	2015	847475	16	3
Japan	Hokkaido	1979	2015	1601079	14	17
Japan	Hyogo	1979	2015	1537325	18	6
Japan	Ibaraki	1979	2015	829982	19	19
Japan	Ishikawa	1979	2015	348623	15	19
Japan	Iwate	1979	2015	466431	14	16
Japan	Kagawa	1979	2015	338541	17	27
Japan	Kagoshima	1979	2015	643883	25	28
Japan	Kanagawa	1979	2015	1817803	17	7
Japan	Kochi	1979	2015	308889	23	26
Japan	Kumamoto	1979	2015	597079	18	26
Japan	Kyoto	1979	2015	739649	16	4
Japan	Mie	1979	2015	561911	18	6

Japan	Miyagi	1979	2015	621541	17	1
Japan	Miyazaki	1979	2015	373118	26	27
Japan	Nagano	1979	2015	704789	16	-1
Japan	Nagasaki	1979	2015	506171	24	26
Japan	Nara	1979	2015	380914	17	6
Japan	Niigata	1979	2015	804829	18	5
Japan	Oita	1979	2015	413658	17	26
Japan	Okayama	1979	2015	621150	16	6
Japan	Okinawa	1979	2015	283659	49	28
Japan	Osaka	1979	2015	2234089	18	6
Japan	Saga	1979	2015	291152	16	28
Japan	Saitama	1979	2015	1463802	17	22
Japan	Shiga	1979	2015	341097	16	4
Japan	Shimane	1979	2015	288400	17	21
Japan	Shizuoka	1979	2015	1029396	21	25
Japan	Tochigi	1979	2015	575095	18	4
Japan	Tokushima	1979	2015	291268	19	26
Japan	Tokyo	1979	2015	3004482	17	22
Japan	Tottori	1979	2015	214323	16	6
Japan	Toyama	1979	2015	361928	16	2
Japan	Wakayama	1979	2015	377606	17	27
Japan	Yamagata	1979	2015	435911	17	-1
Japan	Yamaguchi	1979	2015	542889	15	20
Japan	Yamanashi	1979	2015	274171	15	20
Kuwait	Kuwait	2000	2016	73748	26	36
Mexico	Ciudad Juarez	1998	2014	91721	20	27
Mexico	Comarca Lagunera	1998	2014	99640	35	24
Mexico	Guadalajara	1998	2014	351426	67	21
Mexico	Leon	1998	2014	110095	57	21
Mexico	Monterrey	1998	2014	286416	27	28
Mexico	Puebla-Tlaxcala	1998	2014	206429	82	18
Mexico	San Luis Potosi	1998	2014	77816	52	19
Mexico	Tijuana	1998	2014	96965	40	14
Mexico	Toluca de Lerdo	1998	2014	129783	76	14
Mexico	Valley of Mexico	1998	2014	1529795	71	18
Moldova	Anenii Noi	2003	2010	799	15	21
Moldova	Cahul	2003	2010	2812	17	24
Moldova	Chisinau	2001	2010	54832	15	21
Moldova	Falesti	2003	2010	1463	15	19
Netherlands	Amsterdam	1995	2016	132924	24	15
Netherlands	Den Haag	1995	2016	100303	25	15
Netherlands	Eindhoven	1995	2016	42725	22	15
Netherlands	Rotterdam	1995	2016	133448	24	8
Netherlands	Utrecht	1995	2016	43995	23	15
Norway	Oslo	1979	2018	212098	18	14
Panama	Panama	2013	2016	11457	170	27
Paraguay	Asuncion	2004	2019	48037	31	27
Peru	apurimac	2008	2014	9363	121	8
Peru	arequipa	2008	2014	31601	100	13
Peru	ayacucho	2008	2014	12372	101	10
Peru	cajamarca	2008	2014	22541	153	12
Peru	cusco	2008	2014	26141	126	9
Peru	huancavelica	2008	2014	9378	110	5
Peru	huanuco	2008	2014	17312	135	12
Peru	ica	2008	2014	21647	66	20
Peru	junin	2008	2014	34010	110	4
Peru	la libertad	2008	2014	45559	169	11
Peru	lambayeque	2008	2014	34142	65	20
Peru	lima	2008	2014	248765	72	17

Peru	piura	2008	2014	43031	57	21
Peru	puno	2008	2014	41725	89	9
Peru	san martin	2008	2014	11093	127	24
Peru	tacna	2008	2014	7606	72	17
Peru	ucayali	2008	2014	9956	106	26
Philippines	Bacoor	2011	2019	26499	107	28
Philippines	Callocan	2006	2019	113343	104	28
Philippines	Cebu	2013	2019	46141	157	27
Philippines	Davao	2013	2019	70737	160	27
Philippines	Las Pinas	2006	2019	45941	104	28
Philippines	Makati	2006	2019	41484	109	28
Philippines	Manila	2006	2019	172811	109	28
Philippines	Muntinlupa	2006	2019	35016	109	28
Philippines	Pasig	2006	2019	53623	109	28
Philippines	Quezon	2014	2019	98729	105	28
Philippines	Taguig	2006	2019	45745	109	28
Philippines	Valenzuela	2006	2019	46864	104	28
Portugal	Beja	1980	2015	87793	24	12
Portugal	Castelobranco	1980	2018	115521	23	10
Portugal	Coimbra	1980	2018	195472	26	19
Portugal	Faro	1980	2018	174585	40	14
Portugal	Lisboa	1980	2018	802500	36	13
Portugal	Porto	1980	2018	542557	35	19
Puerto Rico	San Juan	2009	2016	26564	86	27
Romania	Brasov	1994	2016	61466	17	17
Romania	Bucharest	1994	2016	504054	16	21
Romania	Cluj-Napoca	1994	2016	65406	17	17
Romania	Constanta	1994	2016	73990	19	23
Romania	Craiova	1994	2016	57867	15	23
Romania	Galati	1994	2016	58052	16	22
Romania	Iasi	1994	2016	60301	16	21
Romania	Timisoara	1994	2016	70010	16	21
South Africa	Alfred Nzo	1997	2013	114467	30	17
South Africa	Amajuba	1997	2013	95209	34	21
South Africa	Amathole	1997	2013	235000	30	15
South Africa	Bojanala	1997	2013	215910	34	23
South Africa	Buffalo City	1997	2013	183536	37	18
South Africa	Cacadu	1997	2013	76341	26	17
South Africa	Cape Winelands	1997	2013	101671	25	10
South Africa	Capricorn	1997	2013	205787	38	20
South Africa	Central Karoo	1997	2013	13873	23	23
South Africa	Chris Hani	1997	2013	141243	28	19
South Africa	City of Cape Town	1997	2013	447086	50	14
South Africa	City of Johannesburg	1997	2013	553340	41	20
South Africa	City of Tshwane	1997	2013	370121	35	22
South Africa	Dr Kenneth Kaunda	1997	2013	156481	35	22
South Africa	Dr Ruth Segomotsi Mompati	1997	2013	84956	32	22
South Africa	Eden	1997	2013	82205	27	19
South Africa	Ehlanzeni	1997	2013	258712	36	23
South Africa	Ekurhuleni	1997	2013	449732	40	20
South Africa	eThekweni	1997	2013	582400	37	22
South Africa	Fezile Dabi	1997	2013	106758	34	20
South Africa	Frances Baard	1997	2013	80748	24	23
South Africa	Gert Sibande	1997	2013	201085	42	18
South Africa	Greater Sekhukhune	1997	2013	154245	37	21
South Africa	iLembe	1997	2013	96687	43	19
South Africa	Joe Gqabi	1997	2013	70534	27	19
South Africa	John Taolo Gaetsewe	1997	2013	38604	26	23
South Africa	Lejweleputswa	1997	2013	172065	27	21

South Africa	Mangaung	1997	2013	186482	27	22
South Africa	Mopani	1997	2013	154962	34	24
South Africa	Namakwa	1997	2013	16347	20	21
South Africa	Nelson Mandela Bay	1997	2013	215125	33	20
South Africa	Ngaka Modiri Molema	1997	2013	158209	37	22
South Africa	Nkangala	1997	2013	195810	44	19
South Africa	O.R.Tambo	1997	2013	194455	29	16
South Africa	Overberg	1997	2013	30406	35	20
South Africa	Pixley ka Seme	1997	2013	42781	20	24
South Africa	Sedibeng	1997	2013	174249	39	20
South Africa	Sisonke	1997	2013	92073	30	17
South Africa	Siyanda	1997	2013	47034	24	26
South Africa	Thabo Mofutsanyane	1997	2013	196340	36	19
South Africa	Ugu	1997	2013	169571	34	20
South Africa	uMgungundlovu	1997	2013	227558	29	19
South Africa	uMkhanyakude	1997	2013	92434	38	24
South Africa	uMzinyathi	1997	2013	106810	30	21
South Africa	uThukela	1997	2013	140953	33	21
South Africa	uThungulu	1997	2013	182682	33	21
South Africa	Vhembe	1997	2013	134651	35	23
South Africa	Waterberg	1997	2013	74795	39	22
South Africa	West Coast	1997	2013	58114	56	14
South Africa	West Rand	1997	2013	160416	39	20
South Africa	Xhariep	1997	2013	50127	25	22
South Africa	Zululand	1997	2013	117950	34	21
South Korea	Andong	1997	2018	32872	16	23
South Korea	Boryeong	1997	2018	20317	17	24
South Korea	Busan	1997	2018	428378	18	21
South Korea	Cheonan	1997	2018	48679	17	25
South Korea	Chuncheon	1997	2018	34928	17	22
South Korea	Chungju	1997	2018	32513	17	22
South Korea	Daegu	1997	2018	264755	17	23
South Korea	Daejeon	1997	2018	136269	17	24
South Korea	Donghae	1997	2018	14320	16	20
South Korea	Gangneung	1997	2018	32996	18	19
South Korea	Geojae	1997	2018	21434	17	24
South Korea	Gumi	1997	2018	31550	17	23
South Korea	Gwangju	1997	2018	140527	17	23
South Korea	Icheon	1997	2018	22857	17	25
South Korea	Incheon	1997	2018	262393	18	23
South Korea	Jecheon	1997	2018	22122	17	21
South Korea	Jeju	1997	2018	38878	17	24
South Korea	Jeongeup	1997	2018	26863	17	24
South Korea	Jinju	1997	2018	42417	16	23
South Korea	Milyang	1997	2018	24563	17	22
South Korea	Mokpo	1997	2018	28919	16	22
South Korea	Mungyeong	1997	2018	18123	16	23
South Korea	Namwon	1997	2018	19099	18	22
South Korea	Pohang	1997	2018	60731	17	20
South Korea	Seogyupo	1997	2018	17808	17	24
South Korea	Seosan	1997	2018	21986	18	23
South Korea	Seoul	1997	2018	881716	18	24
South Korea	Sokcho	1997	2018	11953	16	21
South Korea	Suwon	1997	2018	83174	17	23
South Korea	Taebaek	1997	2018	8509	15	19
South Korea	Tongyeong	1997	2018	20451	17	24
South Korea	Ulsan	1997	2018	95097	18	21
South Korea	Wonju	1997	2018	36846	17	22
South Korea	Yeongju	1997	2018	22331	16	23

South Korea	Yeosu	1997	2018	40767	18	21
South Korea	Yeongcheon	1997	2018	23216	16	21
Spain	A Coruna	1990	2014	54375	33	12
Spain	Albacete	1990	2014	25183	20	10
Spain	Alicante	1990	2014	57825	29	14
Spain	Almeria	1990	2014	31718	37	15
Spain	Avila	1990	2014	10456	20	5
Spain	Badajoz	1990	2014	24373	22	11
Spain	Barcelona	1990	2014	393885	25	12
Spain	Bilbao	1990	2014	85143	27	10
Spain	Burgos	1990	2014	34905	20	7
Spain	Caceres	1990	2014	15075	21	10
Spain	Cadiz	1990	2014	30384	31	15
Spain	Castellon	1990	2014	29637	26	12
Spain	Ceuta	1990	2014	11914	53	15
Spain	Ciudad Real	1990	2014	13156	19	10
Spain	Cordoba	1990	2014	59896	20	11
Spain	Cuenca	1990	2014	11197	20	5
Spain	Girona	1990	2014	15083	20	11
Spain	Granada	1990	2014	51709	21	8
Spain	Guadalajara	1990	2014	12284	20	7
Spain	Huelva	1990	2014	27290	24	14
Spain	Huesca	1990	2014	11444	19	6
Spain	Jaen	1990	2014	20458	20	9
Spain	Leon	1990	2014	31433	22	6
Spain	Lleida	1990	2014	25335	18	10
Spain	Logrono	1990	2014	26511	22	9
Spain	Lugo	1990	2014	20716	26	10
Spain	Madrid	1990	2014	635447	19	8
Spain	Malaga	1990	2014	105276	27	12
Spain	Melilla	1990	2014	10134	31	15
Spain	Murcia	1990	2014	65346	25	27
Spain	Ourense	1990	2014	24237	25	10
Spain	Oviedo	1990	2014	48946	24	8
Spain	Palencia	1990	2014	18591	20	8
Spain	Palma Mallorca	1990	2014	68971	29	14
Spain	Palmas G. Canaria	1990	2014	66933	58	17
Spain	Pamplona	1990	2014	38222	22	9
Spain	Pontevedra	1990	2014	15005	34	12
Spain	Salamanca	1990	2014	35218	20	9
Spain	San Sebastian	1990	2014	41490	28	10
Spain	Santander	1990	2014	43721	31	11
Spain	Segovia	1990	2014	11901	20	5
Spain	Sevilla	1990	2014	141794	22	12
Spain	Soria	1990	2014	7682	21	5
Spain	Tarragona	1990	2014	21942	29	13
Spain	Tenerife	1990	2014	39113	57	17
Spain	Teruel	1990	2014	7674	20	5
Spain	Toledo	1990	2014	12742	19	8
Spain	Valencia	1990	2014	172452	23	26
Spain	Valladolid	1990	2014	62127	20	8
Spain	Vitoria	1990	2014	38531	23	9
Spain	Zamora	1990	2014	14658	20	10
Spain	Zaragoza	1990	2014	137572	18	9
Sweden	Gothenburg	1990	2016	183779	20	15
Sweden	Malmo	1990	2016	141442	21	5
Sweden	Stockholm	1990	2016	392073	19	2
Switzerland	Basel	1995	2013	37607	18	16
Switzerland	Bern	1995	2013	28193	17	16



Switzerland	Geneve	1995	2013	26306	18	15
Switzerland	Lausanne	1995	2013	20810	20	6
Switzerland	Lugano	1995	2013	28567	18	4
Switzerland	Luzern	1995	2013	15073	18	14
Switzerland	St. Gallen	1995	2013	13543	18	15
Switzerland	Zürich	1995	2013	73539	18	16
Taiwan	Kaohsiung	1994	2014	332220	50	28
Taiwan	Taichung	1994	2014	256565	46	26
Taiwan	Taipei	1994	2014	620788	33	27
Thailand	Amnat Charoen	1999	2008	10191	79	28
Thailand	Ayutthaya	1999	2008	24630	101	29
Thailand	Bangkok	1999	2008	242841	99	29
Thailand	Buri Ram	1999	2008	31550	75	28
Thailand	Chachoengsao	1999	2008	19972	104	29
Thailand	Chaiyaphum	1999	2008	28116	79	28
Thailand	Chanthaburi	1999	2008	21381	145	28
Thailand	Chiang Mai	1999	2008	76294	59	27
Thailand	Chiang Rai	1999	2008	52925	73	26
Thailand	Chon Buri	1999	2008	46481	113	29
Thailand	Chumphon	1999	2008	11974	157	27
Thailand	Kalasin	1999	2008	30249	76	28
Thailand	Kamphaeng Phet	1999	2008	13792	76	29
Thailand	Kanchanaburi	1999	2008	21633	89	28
Thailand	Khon Kaen	1999	2008	59977	69	28
Thailand	Krabi	1999	2008	7368	143	27
Thailand	Lampang	1999	2008	37781	74	27
Thailand	Lamphun	1999	2008	16192	60	27
Thailand	Lop Buri	1999	2008	29371	100	29
Thailand	Maha Sarakham	1999	2008	25121	75	28
Thailand	Mukdahan	1999	2008	7688	77	27
Thailand	Nakhon Pathom	1999	2008	25135	91	29
Thailand	Nakhon Phanom	1999	2008	15974	75	26
Thailand	Nakhon Ratchasima	1999	2008	73701	75	28
Thailand	Nakhon Sawan	1999	2008	37873	70	29
Thailand	Nakhon Si Thammarat	1999	2008	38612	130	27
Thailand	Nan	1999	2008	19042	82	27
Thailand	Narathiwat	1999	2008	15506	112	26
Thailand	Nong Bua Lam Phu	1999	2008	12259	66	28
Thailand	Nong Khai	1999	2008	20118	73	28
Thailand	Nonthaburi	1999	2008	30838	99	29
Thailand	Pathum Thani	1999	2008	22274	98	29
Thailand	Pattani	1999	2008	12344	118	27
Thailand	Phayao	1999	2008	23941	69	27
Thailand	Phetchabun	1999	2008	26200	106	27
Thailand	Phetchaburi	1999	2008	14351	107	28
Thailand	Phichit	1999	2008	15039	92	29
Thailand	Phitsanulok	1999	2008	31576	88	29
Thailand	Phrae	1999	2008	22432	81	27
Thailand	Prachin Buri	1999	2008	14841	112	28
Thailand	Prachuap Khiri Khan	1999	2008	13912	138	26
Thailand	Ratchaburi	1999	2008	29860	91	28
Thailand	Rayong	1999	2008	18185	134	28
Thailand	Roi Et	1999	2008	39160	81	28
Thailand	Sa Kaeo	1999	2008	13335	102	27
Thailand	Sakon Nakhon	1999	2008	31563	74	27
Thailand	Samut Sakhon	1999	2008	15214	110	29
Thailand	Samutprakan	1999	2008	29796	110	29
Thailand	Saraburi	1999	2008	22361	107	28
Thailand	Si Sa Ket	1999	2008	35365	77	28

Thailand	Songkhla	1999	2008	33372	129	27
Thailand	Sukhothai	1999	2008	17727	80	29
Thailand	Suphanburi	1999	2008	24506	76	29
Thailand	Surat Thani	1999	2008	21994	124	27
Thailand	Surin	1999	2008	30862	78	28
Thailand	Tak	1999	2008	11373	77	28
Thailand	Trang	1999	2008	13314	136	27
Thailand	Ubon Ratchathani	1999	2008	48333	82	27
Thailand	Udon Thani	1999	2008	44428	77	28
Thailand	Uttaradit	1999	2008	19590	84	27
Thailand	Yala	1999	2008	10887	97	26
Thailand	Yasothon	1999	2008	15133	84	28
UK	Accrington/Rossendale	1990	2016	14882	26	8
UK	Barnsley/Dearne Valley	1990	2016	26381	25	13
UK	Basildon	1990	2016	20303	24	15
UK	Basingstoke	1990	2016	13816	24	10
UK	Bedford	1990	2016	19846	23	15
UK	Birkenhead	1990	2016	72567	29	15
UK	Blackburn	1990	2016	27275	27	14
UK	Blackpool	1990	2016	61411	31	8
UK	Bournemouth/Poole	1990	2016	112845	29	16
UK	Brighton and Hove	1990	2016	112749	34	9
UK	Bristol	1990	2016	113971	26	15
UK	Burnley	1990	2016	29757	26	8
UK	Burton upon Trent	1990	2016	16029	26	14
UK	Cambridge	1990	2016	20380	23	15
UK	Cardiff	1990	2016	76023	30	9
UK	Chelmsford	1990	2016	15268	24	15
UK	Cheltenham	1990	2016	25148	25	9
UK	Chesterfield	1990	2016	18946	26	13
UK	Colchester	1990	2016	17437	25	8
UK	Coventry	1990	2016	66984	25	14
UK	Crawley	1990	2016	24064	25	15
UK	Derby	1990	2016	48351	25	14
UK	Doncaster	1990	2016	24608	25	14
UK	Eastbourne	1990	2016	23630	33	16
UK	Exeter	1990	2016	19489	28	9
UK	Farnborough/Aldershot	1990	2016	33087	24	15
UK	Gloucester	1990	2016	27033	25	9
UK	Grimsby	1990	2016	24803	25	7
UK	Hastings	1990	2016	37625	32	9
UK	High Wycombe	1990	2016	12728	24	10
UK	Ipswich	1990	2016	31450	25	8
UK	Kingston upon Hull	1990	2016	68874	27	14
UK	Leicester	1990	2016	86424	24	14
UK	Lincoln	1990	2016	18262	24	15
UK	Liverpool	1990	2016	214141	29	15
UK	London	1990	2016	1631133	24	15
UK	Luton	1990	2016	45746	24	10
UK	Maidstone	1990	2016	16890	25	15
UK	Manchester	1990	2016	510109	27	13
UK	Mansfield	1990	2016	28115	25	14
UK	Medway Towns	1990	2016	42254	24	15
UK	Milton Keynes	1990	2016	23091	24	10
UK	Newport	1990	2016	40521	28	9
UK	Northampton	1990	2016	38039	24	10
UK	Norwich	1990	2016	37123	26	7
UK	Nottingham	1990	2016	136290	25	14
UK	Oxford	1990	2016	19289	24	9

UK	Paignton/Torquay	1990	2016	31006	33	9
UK	Peterborough	1990	2016	27262	24	15
UK	Plymouth	1990	2016	51032	40	10
UK	Preston	1990	2016	45498	27	14
UK	Reading	1990	2016	42428	24	10
UK	Sheffield	1990	2016	128199	25	13
UK	Slough	1990	2016	22037	24	10
UK	South Hampshire	1990	2016	146972	30	16
UK	Southend-on-Sea	1990	2016	65632	25	9
UK	Stoke-on-Trent	1990	2016	71454	26	14
UK	Sunderland	1990	2016	62603	25	7
UK	Swansea	1990	2016	43754	35	9
UK	Swindon	1990	2016	30211	26	9
UK	Teesside	1990	2016	78525	26	6
UK	Telford	1990	2016	15787	27	14
UK	Thanet	1990	2016	26455	29	9
UK	Tyneside	1990	2016	176326	25	7
UK	Warrington	1990	2016	28998	26	14
UK	West Midlands	1990	2016	546051	26	14
UK	West Yorkshire	1990	2016	313473	25	14
UK	Wigan	1990	2016	26328	27	15
UK	Worcester	1990	2016	16157	25	9
UK	York	1990	2016	25755	25	14
Uruguay	Montevideo	2012	2016	153554	27	14
USA	Akron	1979	2006	135287	17	21
USA	Albany	1979	2006	76567	15	20
USA	Albuquerque	1979	2006	87095	19	22
USA	Allentown	1979	2006	75945	16	23
USA	Anaheim	1979	2006	387309	36	15
USA	Anchorage	1982	2006	18264	21	13
USA	Annandale	1982	2006	77363	17	25
USA	AnnArbor	1979	2006	41131	16	21
USA	Atlanta	1979	2006	371991	23	25
USA	Atlantic City	1979	2006	62422	19	23
USA	Atzec	2001	2006	3858	16	23
USA	Atzec	1979	1993	5085	16	23
USA	Augusta	1979	2006	44973	23	26
USA	Austin	1979	2006	82661	24	28
USA	Bakersfield	1979	2006	106195	20	11
USA	Baltimore	1979	2006	402581	18	24
USA	Bangor	1979	2006	32690	15	18
USA	Barnstable	1979	2006	61550	21	19
USA	bath	2001	2006	5482	21	25
USA	bath	1979	1993	13741	21	25
USA	BatonRouge	1979	2006	75846	31	27
USA	bergen	1979	2006	302929	15	23
USA	Birmingham	1979	2006	214971	25	25
USA	Boise	1979	2000	27100	14	7
USA	Boston	1979	2006	609224	15	20
USA	boulder	1979	2006	29602	16	18
USA	Brownsville	1979	2006	43187	45	29
USA	Buffalo	1979	2006	270058	15	21
USA	Burlington	1979	2006	21256	14	19
USA	Canton	1979	2006	96347	17	21
USA	carlisle	1979	2006	46518	16	23
USA	CedarRapids	1979	2006	34949	16	22
USA	CharlestSC	1979	2006	60241	29	26
USA	charlestWV	1979	2006	61449	19	23
USA	Charlotte	1979	2006	97916	20	25

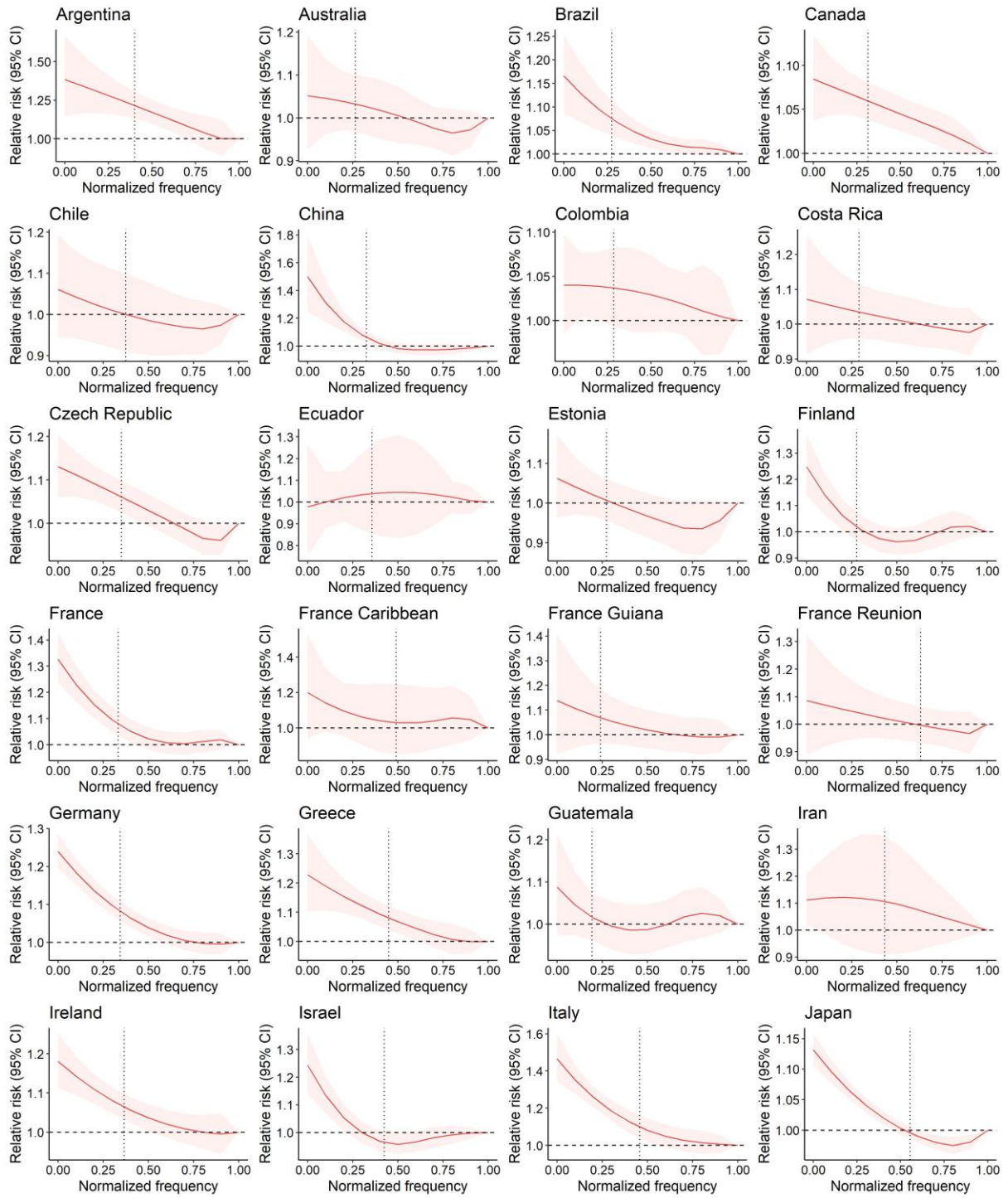
USA	chatta	1979	2006	74031	22	24
USA	Chicago	1979	2006	1414183	16	23
USA	Cincinnati	1979	2006	218790	18	24
USA	Cleveland	1979	2006	509666	16	22
USA	Colorado Spri	1979	2006	60572	17	19
USA	Columbia	1979	2006	92409	24	25
USA	Columbus	1979	2006	197056	17	22
USA	corpus christ	1979	2006	56152	40	29
USA	Dallas	1979	2006	319115	18	28
USA	Davenport	1979	2006	69394	16	22
USA	davis	1979	2006	20885	15	23
USA	Dayton	1979	2006	135305	17	23
USA	Daytona Beach	1979	2006	127724	44	27
USA	Denver	1979	2006	223904	15	20
USA	DesMoines	1979	2006	67629	16	22
USA	Detroit	1979	2006	918041	15	22
USA	Dodge	2001	2006	4861	14	20
USA	Dodge	1979	1993	10293	14	20
USA	Dover	1979	2006	23487	17	25
USA	Durham	1979	2006	39411	20	24
USA	El centro	1979	2006	19374	19	34
USA	Elizabeth	1979	2006	124363	16	22
USA	Elkhart	1979	2006	32044	15	22
USA	ElPaso	1979	2006	86775	18	27
USA	Erie	1979	2006	68703	17	20
USA	Essex	1979	2006	167046	16	22
USA	Eugene	1979	2006	62973	23	7
USA	Evansville	1979	2006	47050	17	24
USA	Everett	1979	2006	80500	29	7
USA	Fargo	1979	2006	17448	13	19
USA	Fayetteville	1979	2006	41345	22	25
USA	flint	1979	2006	93405	15	1
USA	Fresno	1979	2006	124994	19	10
USA	Ft Wayne	1979	2006	63039	16	22
USA	ftlaud	1979	2006	372759	62	27
USA	ftmyers	1979	2006	102492	52	27
USA	ftpierce	1979	2006	77216	56	27
USA	ftworth	1979	2006	207763	17	28
USA	Gary	1979	2006	112632	16	23
USA	Gasinsville	1979	2006	32437	40	26
USA	Gettysburg	2001	2006	4847	16	23
USA	Gettysburg	1979	1993	8964	16	23
USA	Grand heaven	1979	2006	31699	15	22
USA	Grand Junctio	2001	2006	6658	16	21
USA	Grand Junctio	1979	1993	10116	16	21
USA	GrandRapids	1979	2006	97955	16	21
USA	green bay	1979	2006	36587	14	0
USA	Greensb	1979	2006	80067	21	24
USA	greensburg	1979	2006	107692	18	21
USA	greenv	1979	2006	70197	21	24
USA	Harrisburg	1979	2006	62823	17	23
USA	Hartford	1979	2006	197042	14	21
USA	Hicory	1979	2006	27566	21	24
USA	Holland	2001	2006	4594	15	22
USA	Holland	1979	1993	8959	15	22
USA	honolulu	1979	2000	96559	105	25
USA	Houston	1979	2006	441680	33	28
USA	Indianapolis	1979	2006	186565	17	23
USA	Iowa city	2001	2006	2892	16	22

USA	Iowa city	1979	1993	5981	16	22
USA	Jacksonville	1979	2006	151288	36	26
USA	Jersy city	1979	2006	135009	16	23
USA	Kalamazoo	1979	2006	43681	16	21
USA	Kansas	1979	2006	269930	14	25
USA	kenosha	1979	2006	28701	16	1
USA	Klamath	2001	2006	3818	21	2
USA	Klamath	1979	1993	6832	21	2
USA	Knoxville	1979	2006	99301	21	24
USA	LafayetteIN	1979	2006	23809	17	23
USA	lafayetteLA	1979	2006	29235	32	27
USA	Lake charles	1979	2006	38316	32	27
USA	lakeland	1979	2006	113056	46	27
USA	lancast	1979	2006	98448	16	23
USA	lansing	1979	2006	46291	15	21
USA	LaPorte	1979	2006	25428	15	23
USA	lasvegas	1979	2006	194029	16	9
USA	LittleRock	1979	2006	79092	18	26
USA	Logan	2001	2006	2214	15	20
USA	Logan	1979	1993	4370	15	20
USA	LosAngeles	1979	2006	1563124	32	14
USA	louisv	1979	2006	175055	19	23
USA	Macon	1979	2006	40885	25	25
USA	MadisonIL	1979	2006	59801	15	21
USA	madisonWI	1979	2006	59416	15	21
USA	marlboro	1979	2006	95904	17	25
USA	mcallen	1979	2006	58882	38	30
USA	Medford	1979	2006	39385	22	6
USA	melbourn	1979	2006	101634	51	27
USA	memphis	1979	2006	188151	20	26
USA	mercier	1979	2006	34484	17	21
USA	Miami	1979	2006	460600	56	27
USA	middles	1979	2006	135956	16	23
USA	Middletown	1979	2006	60153	15	20
USA	milwauke	1979	2006	292136	15	1
USA	minneap	1979	2006	303014	15	22
USA	Mobile	1979	2006	88614	33	27
USA	Modesto	1979	2006	75784	21	22
USA	monmouth	1979	2006	285937	15	23
USA	Monroe	1979	2006	32497	23	27
USA	Montgomery	1979	2006	49565	26	26
USA	Muncie	1979	2006	28744	17	22
USA	Muskegon	1979	2006	38358	15	2
USA	Myrtle Beach	1979	2006	34568	27	26
USA	Nampa	1979	1993	9818	14	6
USA	Nashua	1979	2006	62844	14	19
USA	nashv	1979	2006	120108	20	25
USA	nassau	1979	2006	579094	18	22
USA	newark	1979	2006	281367	16	22
USA	newburgh	1979	2006	62467	16	22
USA	newhaven	1979	2006	197604	17	21
USA	newlond	1979	2006	50679	18	21
USA	NewOrleans	1979	2006	229374	37	27
USA	NewYork	1979	2006	1774932	16	23
USA	Niles	1979	2006	37685	16	22
USA	Norfolk	1979	2006	214309	19	25
USA	Oakland	1979	2006	401000	38	16
USA	ocala	1979	2006	65892	41	26
USA	Oklahoma	1979	2006	145308	14	26

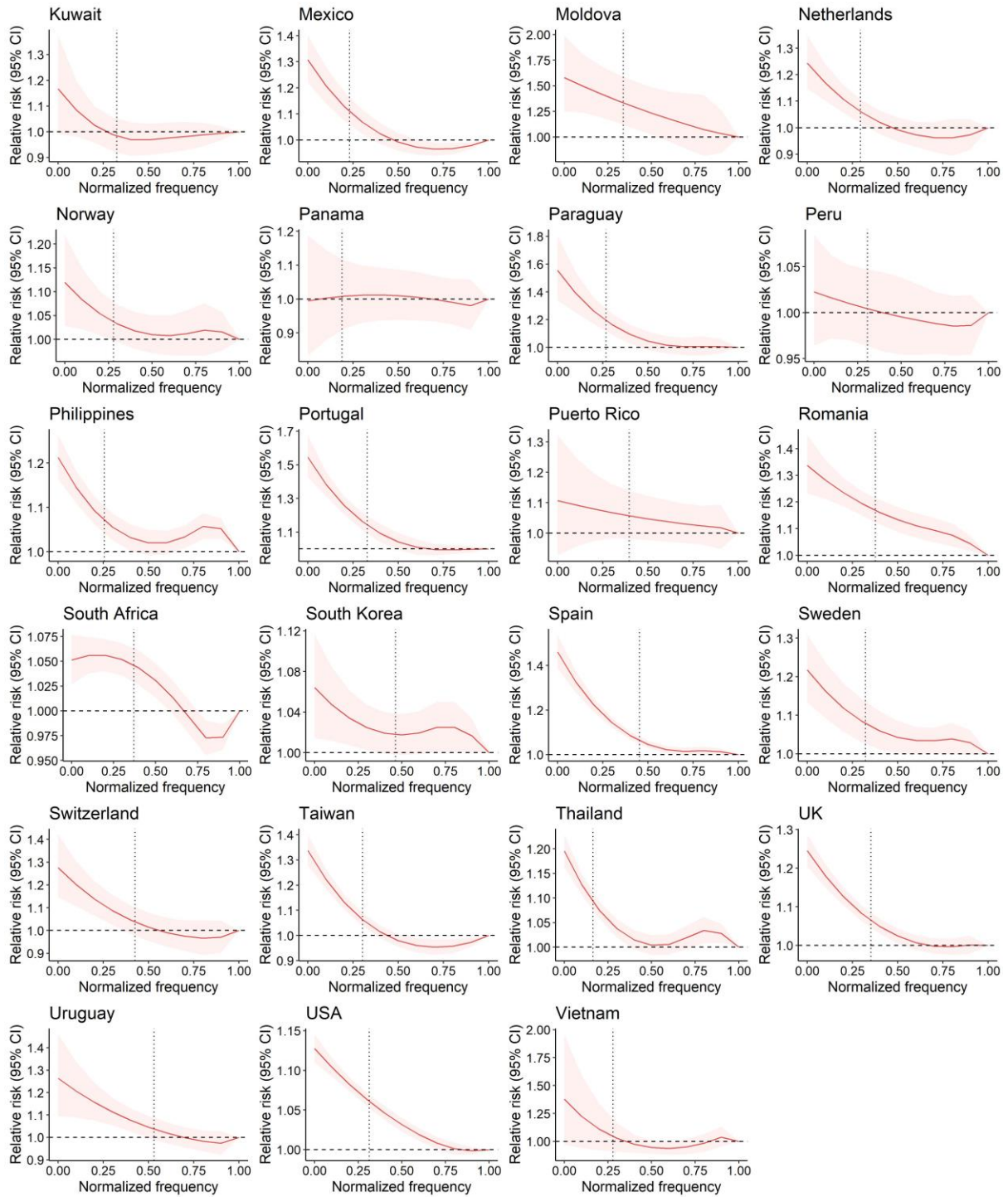
USA	Omaha	1979	2006	89867	15	23
USA	Orlando	1979	2006	185329	44	27
USA	Ottawa	1979	2006	31500	15	22
USA	Palmbeach	1979	2006	273357	50	27
USA	Pensacola	1979	2006	59860	35	26
USA	philly	1979	2006	1150556	16	23
USA	Phoenix	1979	2006	450810	17	34
USA	pittsb	1979	2006	406829	18	21
USA	Plymouth	1979	2006	95875	15	21
USA	Portage	1979	2006	23881	24	8
USA	PortArthur	1979	2006	63449	34	28
USA	PortlandOR	1979	2006	258105	24	8
USA	portlme	1979	2006	57664	18	18
USA	Providence	1979	2006	320450	14	21
USA	Provo	1979	2006	32477	14	22
USA	raleigh	1979	2006	68907	20	24
USA	reading	1979	2006	89666	17	23
USA	Reno	1979	2006	52607	16	1
USA	Richmond	1979	2006	131023	17	25
USA	Riverside	1979	2006	508195	23	12
USA	rochest	1979	2006	160041	14	22
USA	Rockville	1979	2006	109677	16	24
USA	Sacramento	1979	2006	205317	21	21
USA	Saint Charles	1979	2006	32292	15	24
USA	Saint Clair	1979	2006	61631	17	24
USA	SaltLake	1979	2006	108890	14	24
USA	San Jose	1979	2006	217751	27	11
USA	Santa Barbara	1979	2006	69492	28	12
USA	santonio	1979	2006	225699	27	28
USA	sarasota	1979	2006	180910	51	27
USA	Scranton	1979	2006	190035	15	20
USA	sdiego	1979	2006	444459	46	15
USA	Seattle	1979	2006	278299	27	7
USA	sfranc	1979	2006	315306	55	14
USA	Sioux City	2001	2006	4986	14	22
USA	Sioux City	1979	1993	13235	14	22
USA	South bend	1979	2006	60620	16	22
USA	Spartanburg	1979	2006	55552	21	24
USA	Spokane	1979	2006	84463	17	2
USA	SpringfieldMO	1979	2006	52078	16	25
USA	SpringfieldMA	1979	2006	119311	15	20
USA	St. Petersbur	1979	2006	190109	50	27
USA	stamford	1979	2006	179805	16	22
USA	StateCollege	1979	2006	19906	16	22
USA	Steubenville	2001	2006	8087	18	21
USA	Steubenville	1979	1993	20319	18	21
USA	StLouis	1979	2006	376017	17	25
USA	stockton	1979	2006	99173	23	21
USA	Tacoma	1979	2006	115760	28	8
USA	Tallahassee	1979	2006	30232	36	26
USA	Tampa	1979	2006	190109	49	27
USA	Terra Haute	1979	2006	30348	17	24
USA	Toledo	1979	2006	117428	15	22
USA	Topeka	1979	2006	39171	14	25
USA	trenton	1979	2006	72742	16	23
USA	tucson	1979	2006	154104	20	29
USA	Tulsa	1979	2006	116157	15	26
USA	Vancouver	1979	2006	44225	23	7
USA	ventura	1979	2006	105248	36	13

USA	Visalia	1979	2006	61137	20	10
USA	Washington	1979	2006	61356	18	21
USA	WDC	1979	2006	178098	16	25
USA	weber	1979	2006	29741	15	22
USA	wichita	1979	2006	83579	14	26
USA	Wilmington	1979	2006	93203	17	23
USA	Winston	1979	2006	63711	20	24
USA	Worcester	1979	2006	169611	14	21
USA	york	1979	2006	77130	16	24
USA	Youngstown	1979	2006	109493	17	21
Vietnam	Ho Chi Minh City	2010	2013	101959	113	28
Vietnam	Hue	2009	2013	6214	43	28

---



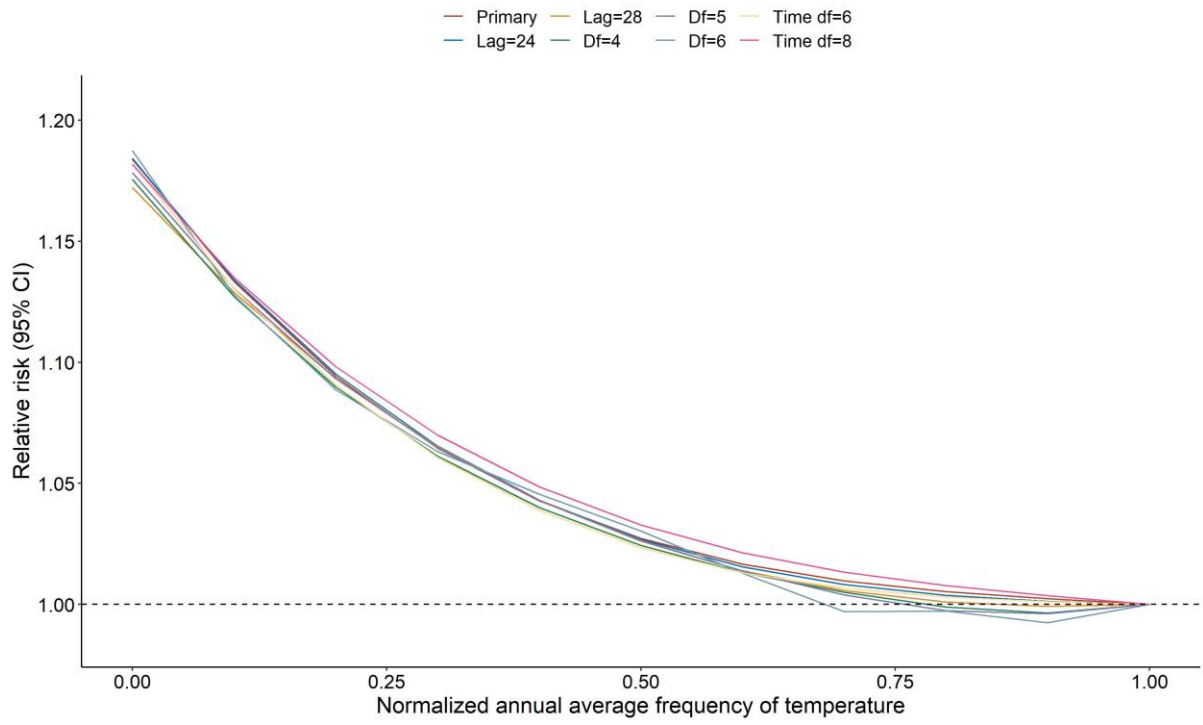




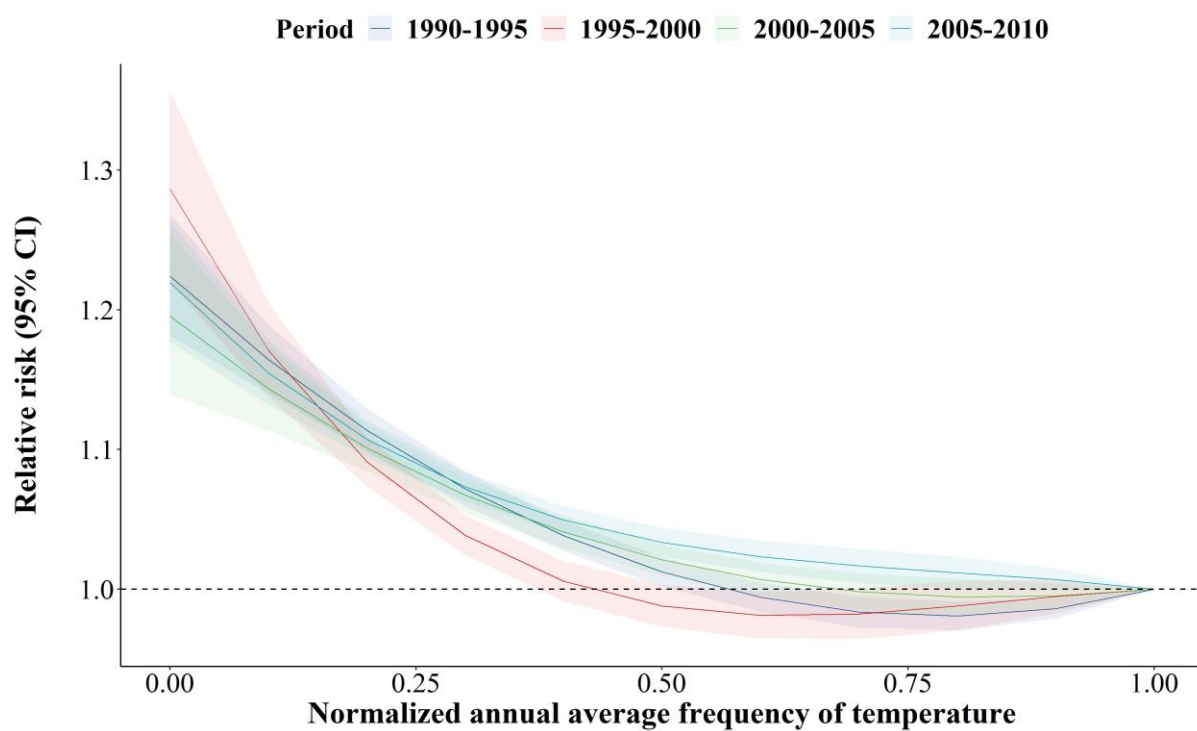
**Figure S1. Cumulative associations between temperature frequency and all-cause mortality by country.** The reference normalized frequency = 1 was used to calculate relative risks. Vertical lines represent the 10th percentile of normalized frequency of temperature.

**Table S2. Percentage change of mortality comparing the 10<sup>th</sup> percentile to the 100<sup>th</sup> percentile of normalized frequency of temperature by climate zones.**

Climate zones	Percentage change (95% CI) (10 <sup>th</sup> vs 100 <sup>th</sup> )
Tropical rainforest climate (Af)	10.22 (6.01, 14.60)
Tropical monsoon climate (Am)	10.24 (6.17, 14.47)
Tropical savanna climate, a dry summer (As)	9.40 (0.15, 19.50)
Tropical savanna climate, a dry winter (Aw)	12.48 (10.50, 14.49)
Hot semi-arid climate (BSh)	11.90 (5.49, 18.70)
Cold semi-arid climate (BSk)	13.21 (8.40, 18.24)
Hot desert climate (BWh)	8.08 (2.31, 14.18)
Cold desert climate (BWk)	8.99 (0.48, 18.22)
Humid subtropical climate (Cfa)	12.67 (11.02, 14.34)
Temperate oceanic climate or subtropical highland climate (Cfb)	17.11 (15.20, 19.04)
Hot-summer Mediterranean climate (Csa)	28.93 (23.11, 35.03)
Warm-summer Mediterranean climate (Csb)	14.18 (10.06, 18.47)
Monsoon-influenced humid subtropical climate (Cwa)	7.72 (3.82, 11.76)
Subtropical highland climate or Monsoon-influenced temperate oceanic climate (Cwb)	8.32 (5.14, 11.60)
Hot-summer humid continental climate (Dfa)	12.81 (10.10, 15.58)
Warm-summer humid continental climate (Dfb)	7.64 (5.62, 9.69)
Subarctic climate (Dfc)	6.40 (-3.92, 17.82)
Monsoon-influenced hot-summer humid continental climate (Dwa)	11.49 (4.63, 18.81)
Monsoon-influenced warm-summer humid continental climate (Dwb)	12.15 (-3.03, 29.69)
Tundra climate (ET)	-0.45 (-11.91, 12.50)



**Figure S2. Sensitivity analyses by using alternative maximum lags and degree of freedoms of frequency (df) and long-term time trends (Time df).**



**Figure S3. Sensitivity analyses of pooled cumulative associations between temperature frequency and all-cause mortality for different periods.**