

THE LANCET

Planetary Health

Supplementary appendix

This appendix formed part of the original submission and has been peer reviewed. We post it as supplied by the authors.

Supplement to: Quilty S, Jupurrurla NF, Lal A, et al. The relative value of sociocultural and infrastructural adaptations to heat in a very hot climate in northern Australia: a case time series of heat-associated mortality. *Lancet Planet Health* 2023; **7**: e684–93.

APPENDIX

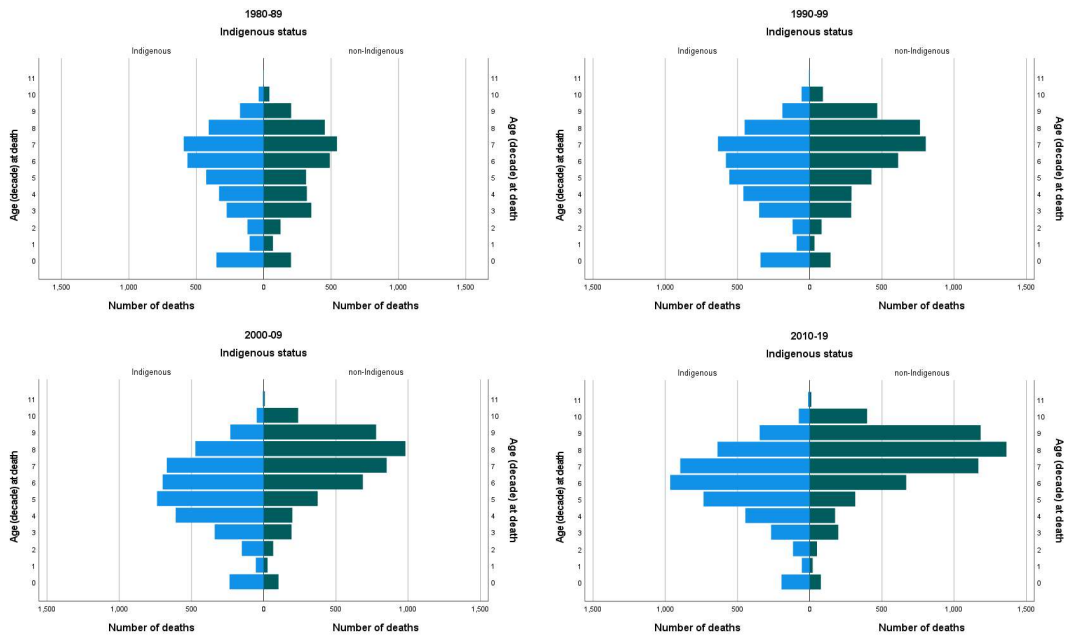


Figure 1 – age at death histograms for each decade of the study period (for first decade of life, 0 = infant death, 1 = age 1-9 years, 2 = 10-19 years etc).

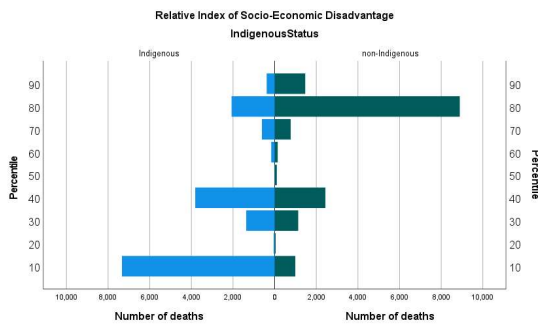


Figure 2 – Australia-wide ranking of location-at-death Index of Relative Socio-economic Disadvantage (IRSD) of Aboriginal vs non-Indigenous deaths.

	Relative Risk	CI
Total deaths	1.09	0.99 - 1.20
Indigenous	1.05	0.95 - 1.18
non-Indigenous	1.18	1.06 - 1.29
Deaths 1980-1999	1.00	0.87 - 1.15
Deaths 2000-2019	1.14	1.01 - 1.29
Deaths in humid zone	1.24	1.05 - 1.45
Deaths in arid zone	1.13	1.01 - 1.27
Deaths, age <50	1.07	0.94 - 1.23
Deaths, age 50 and over	1.19	1.08 - 1.33

Table 1 – relative risk and confidence intervals for temperature associated death, total population and subgroup analysis.