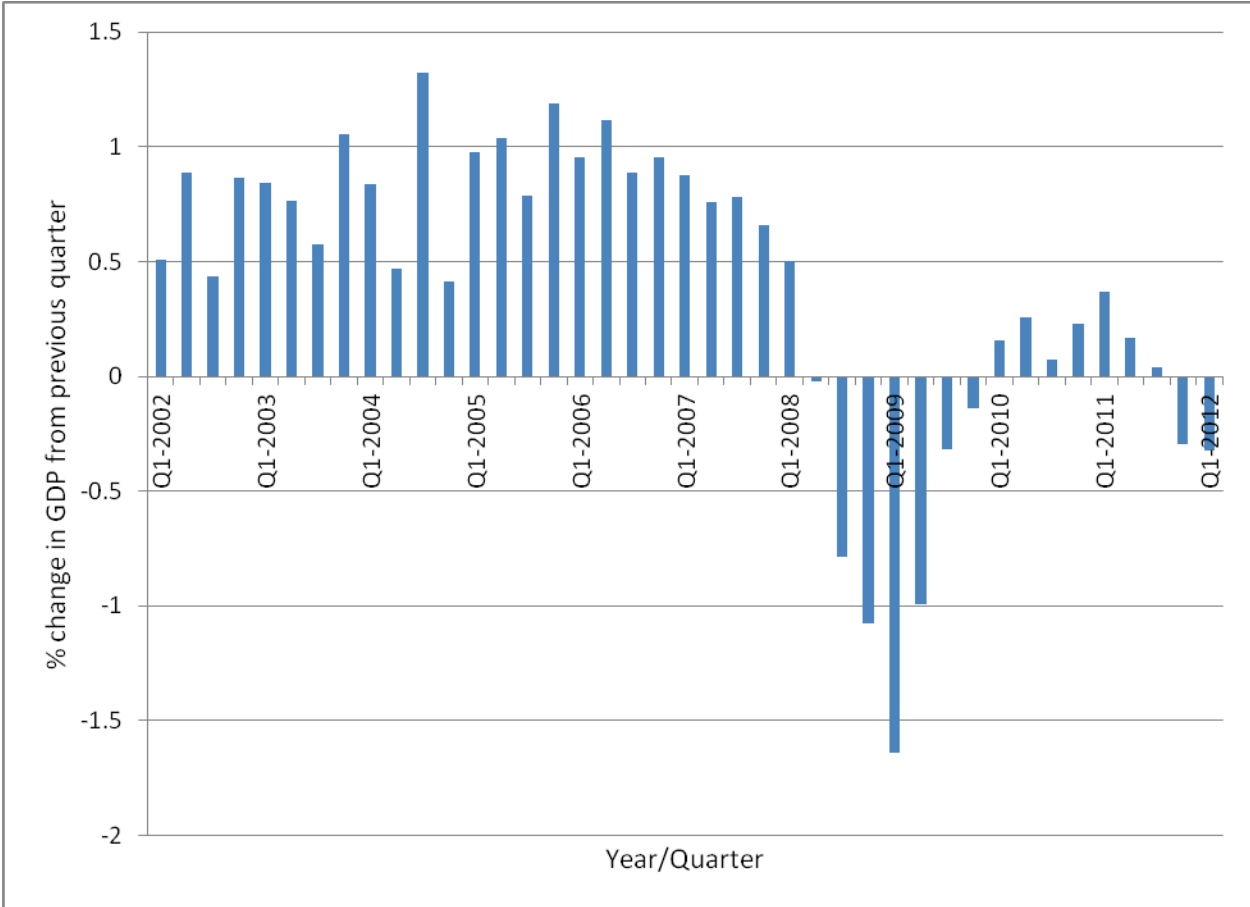


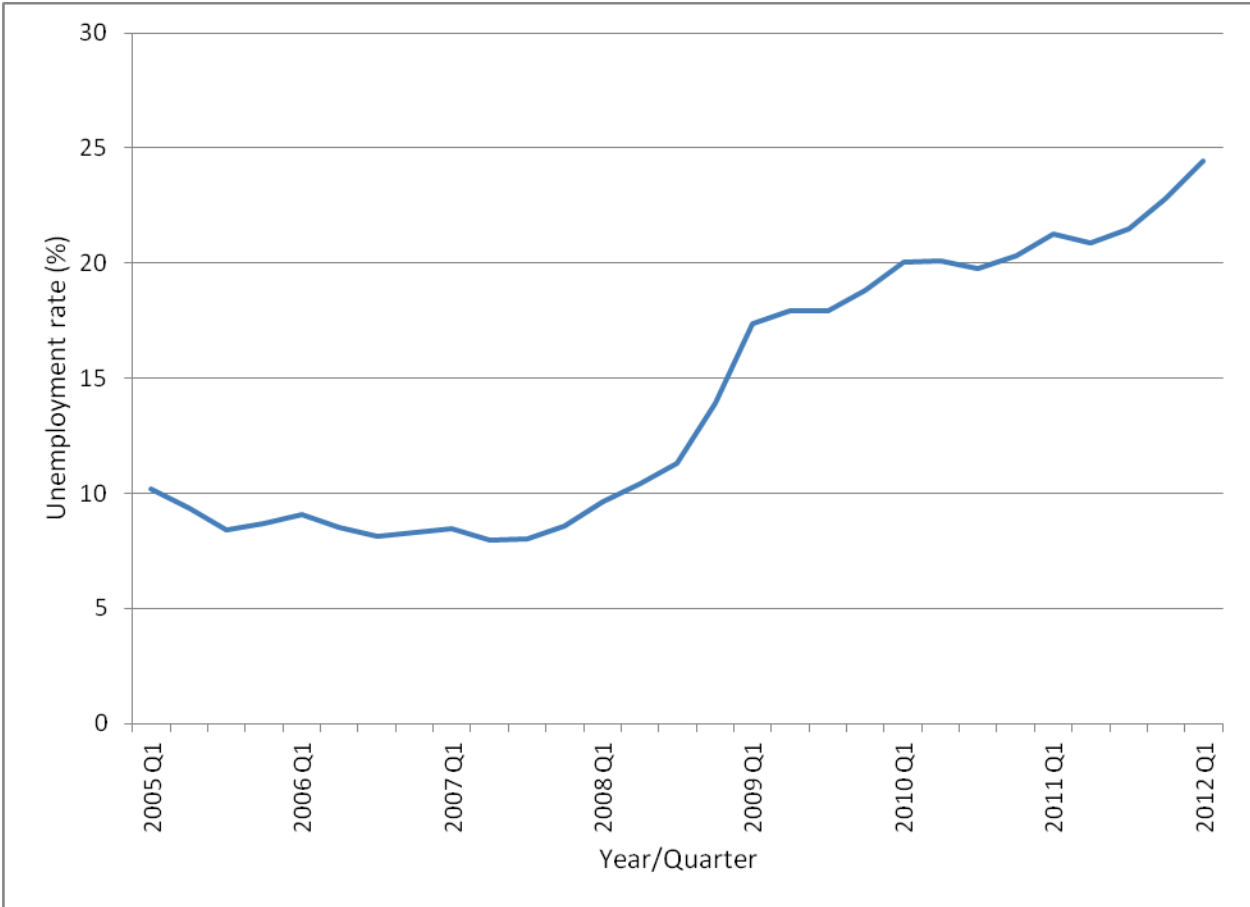
**Web Appendix 1: Gross domestic product growth rate in Spain compared to previous quarter, seasonally adjusted, 2002 to 2012**



Source: Organisation for Economic Cooperation and Development (OECD) †

†Organisation for Economic Cooperation and Development. *OECD.StatExtracts*. 2012 [cited 2012 04/07/2012]; Available from: <http://stats.oecd.org/Index.aspx?QueryName=350>.

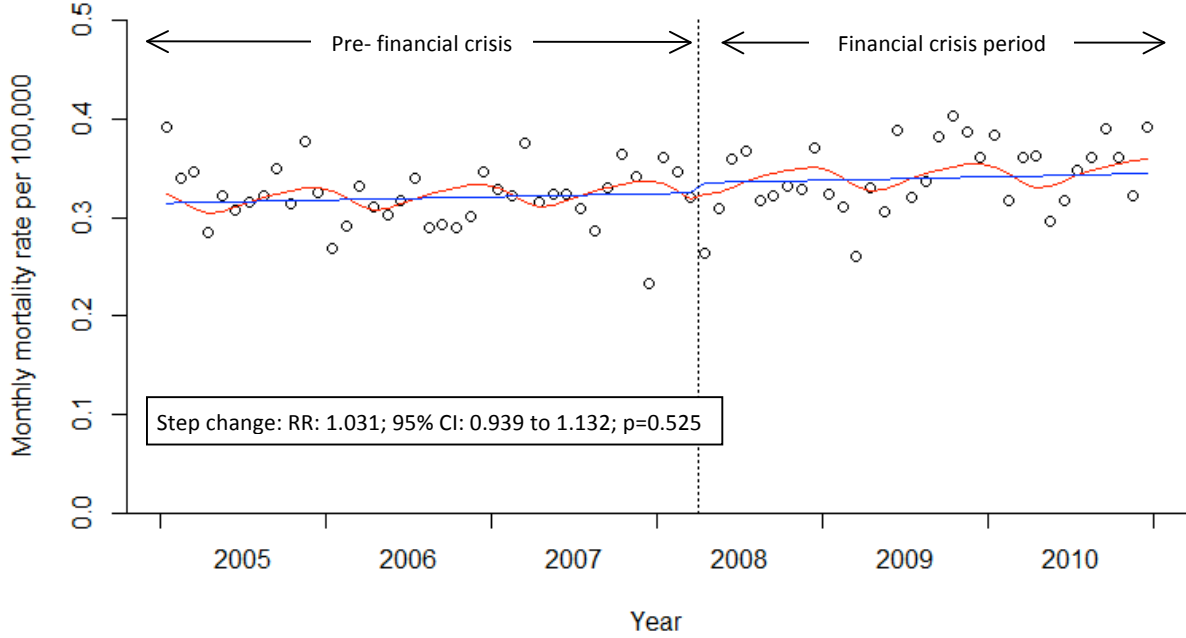
**Web Appendix 2: Unemployment rate in Spain 2005 to 2012**



Source: Instituto Nacional de Estadística [National Statistics Institute] †

†INE. *Instituto Nacional de Estadística [National Statistics Institute]*. [cited 2012 04/07/2012]; Available from: <http://www.ine.es/>.

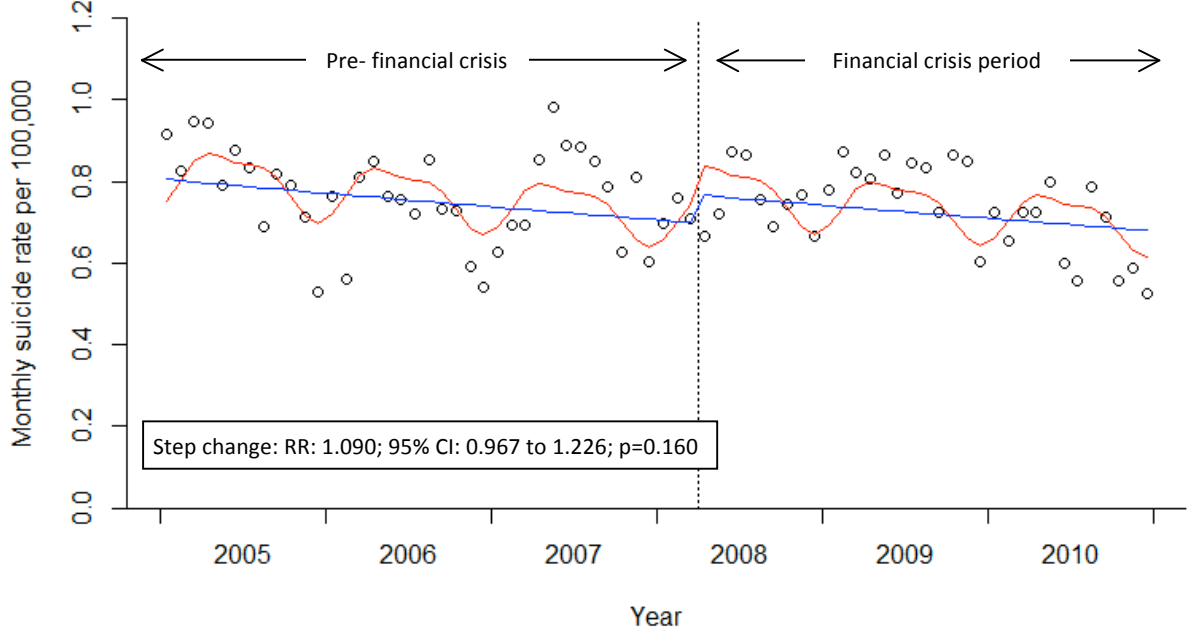
**Web Appendix 3: Trend in monthly mortality rate from accidental falls (control) for all of Spain before and since the financial crisis**



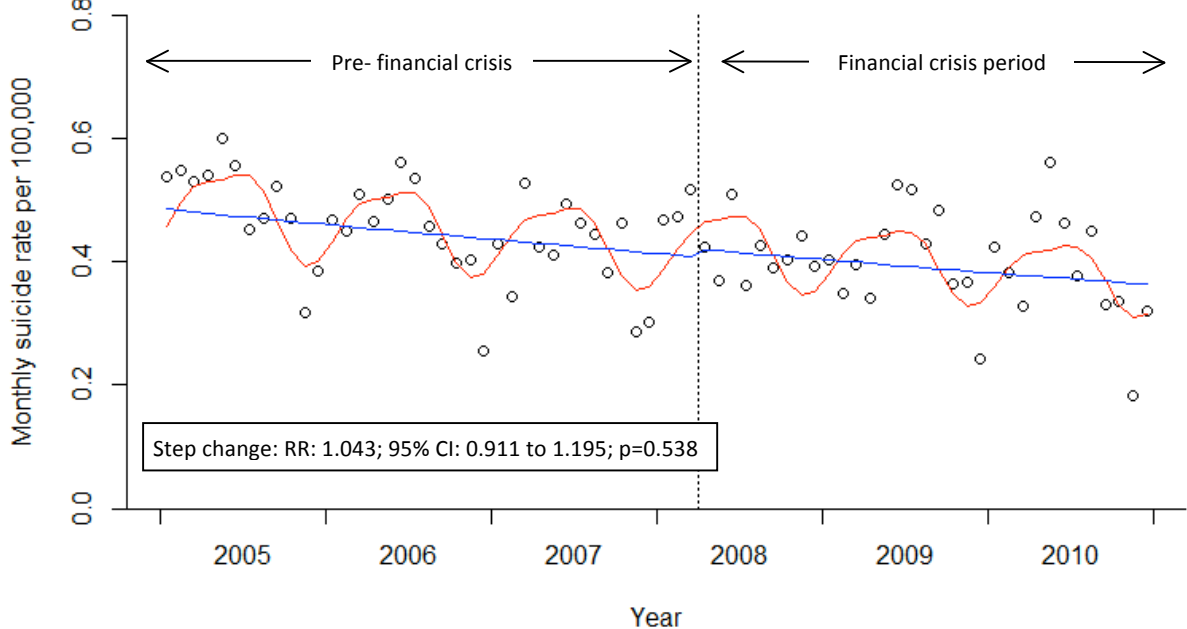
Seasonally adjusted. Circles = observed rates; red line = modelled rates fitted to the data; blue line = deseasonalised trend. Vertical dotted line = onset of the financial crisis

# Web Appendix 4: Trend in monthly suicide rates before and since the financial crisis by area

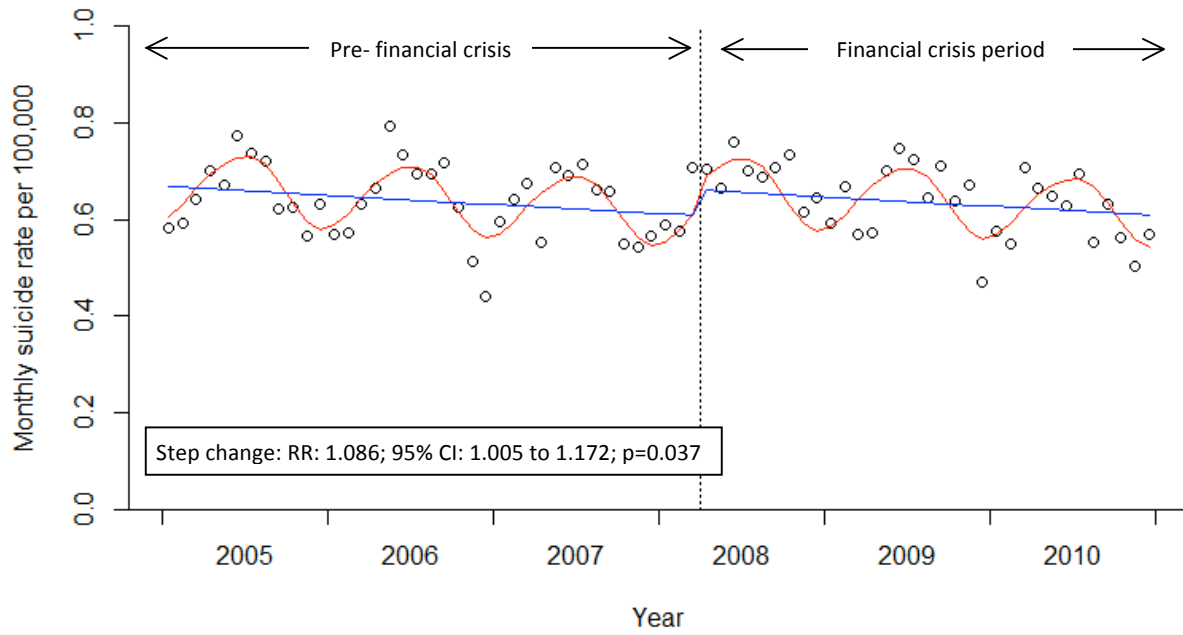
(a) Northern Spain



(b) Central Spain

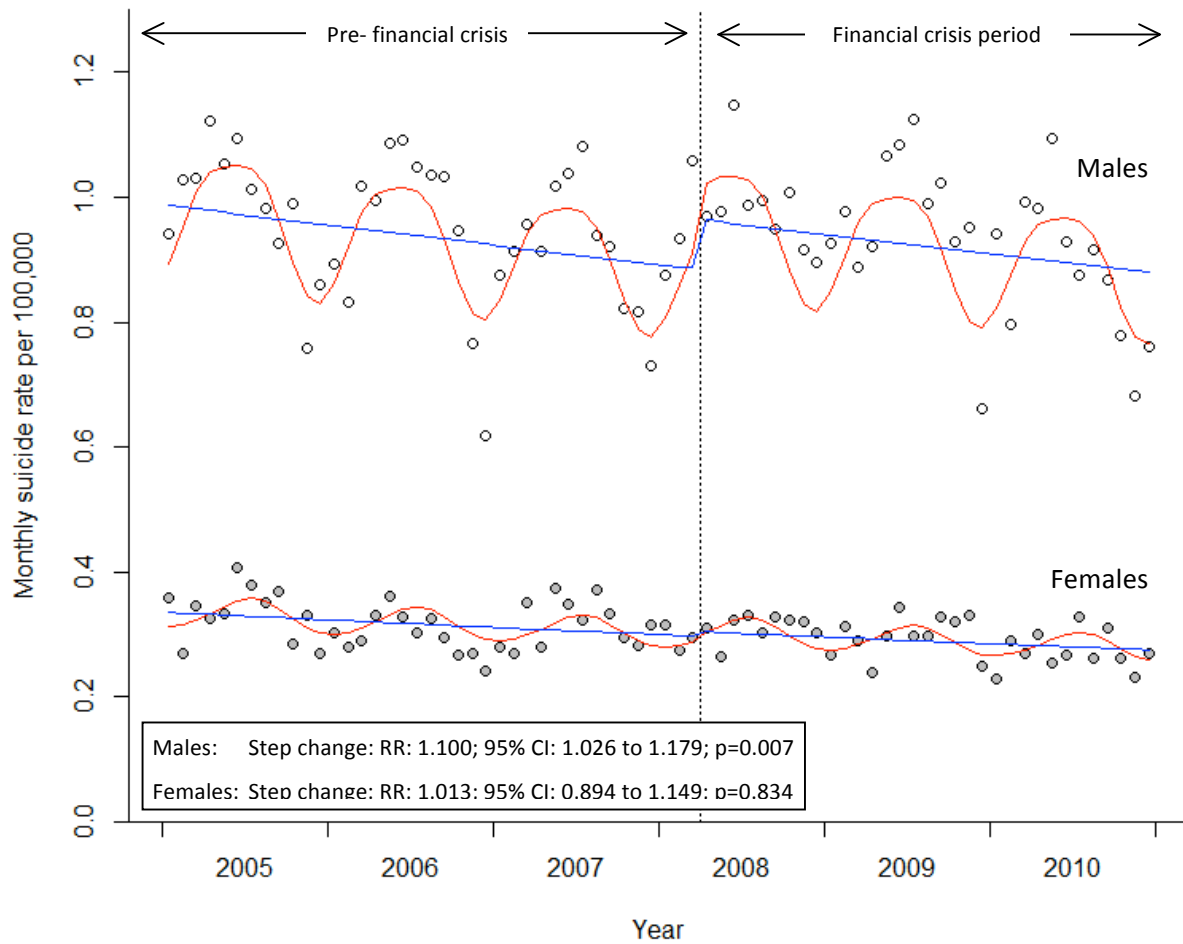


**(c) Mediterranean and Canary Islands**



Seasonally adjusted. Circles = observed rates; red line = modelled rates fitted to the data; blue line = deseasonalised trend. Vertical dotted line = onset of the financial crisis. (a) includes Galicia, Asturias, Cantabria, the Basque Country, Navarra, La Rioja and Aragon; (b) includes Castilla and Leon, Castilla La Mancha, Extremadura and Madrid; (c) includes Catalonia, Valencia, Murcia, Andalucia, the Balearic Islands and the Canary Islands.

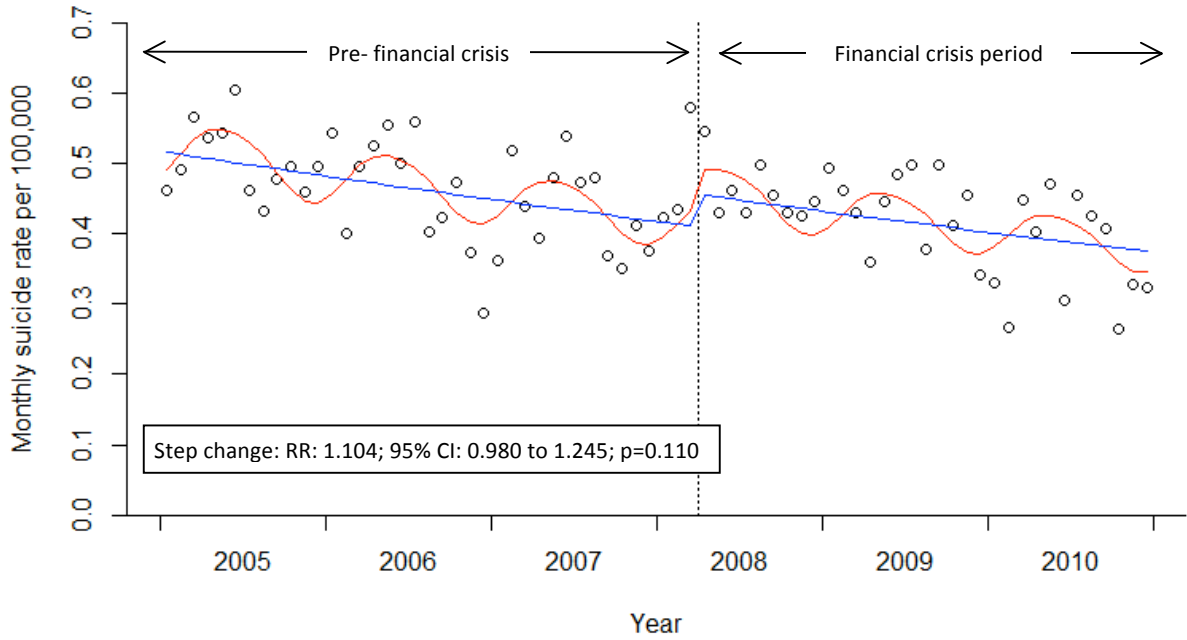
## Web Appendix 5: Trend in monthly suicide rates before and since the financial crisis by sex



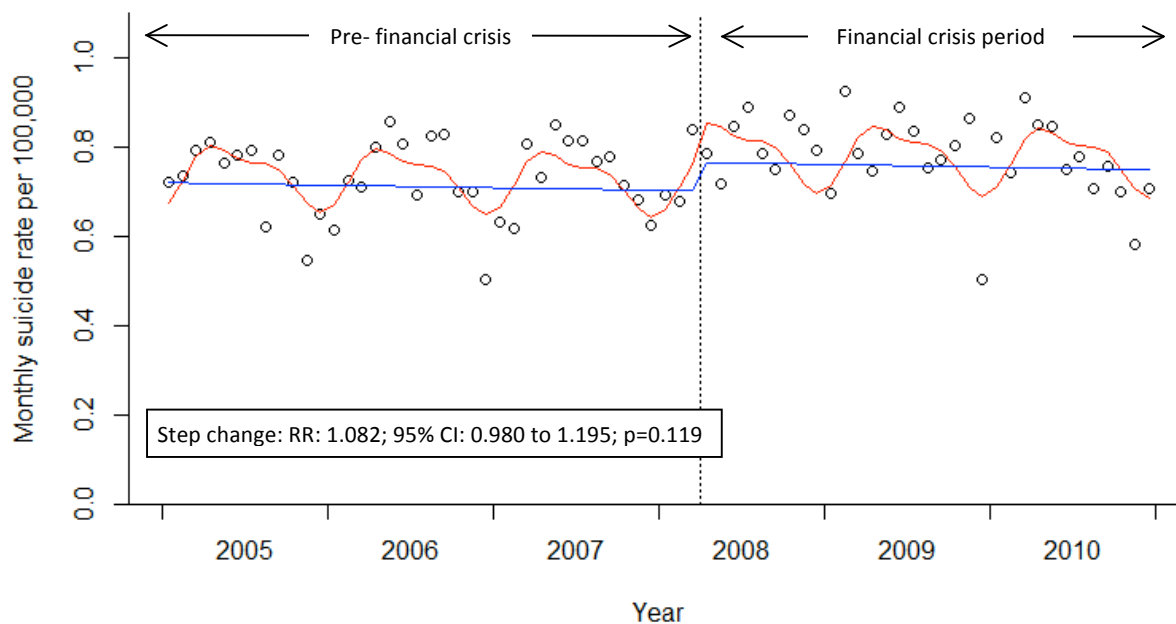
Seasonally adjusted. Circles = observed rates; red line = modelled rates fitted to the data; blue line = deseasonalised trend. Vertical dotted line = onset of the financial crisis.

# Web Appendix 6: Trend in monthly suicide rates before and since the financial crisis by age group

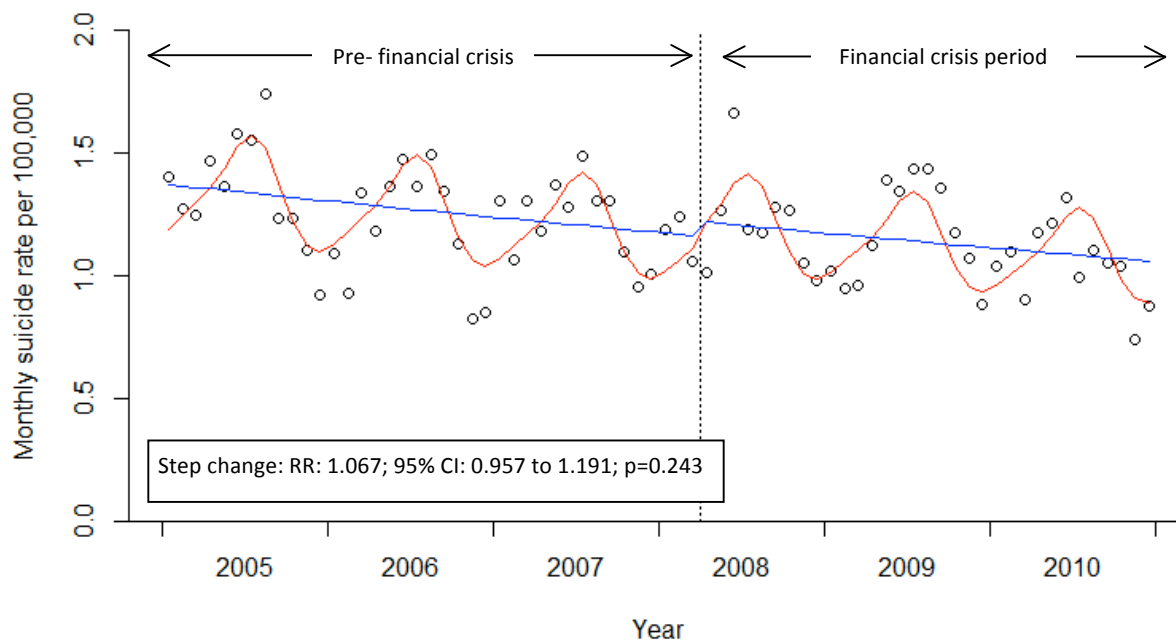
(a) Age 15-39 years



**(b) Age 40-64 years**



**(c) Age 65 years and older**

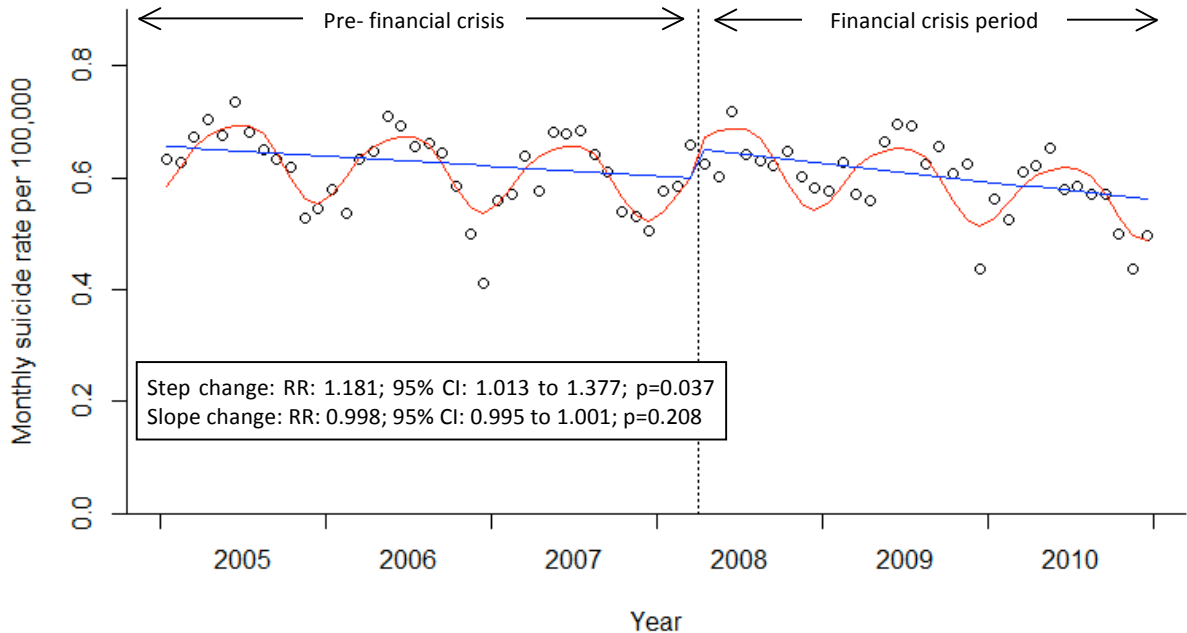


Seasonally adjusted. Circles = observed rates; red line = modelled rates fitted to the data; blue line = deseasonalised trend. Vertical dotted line = onset of the financial crisis.

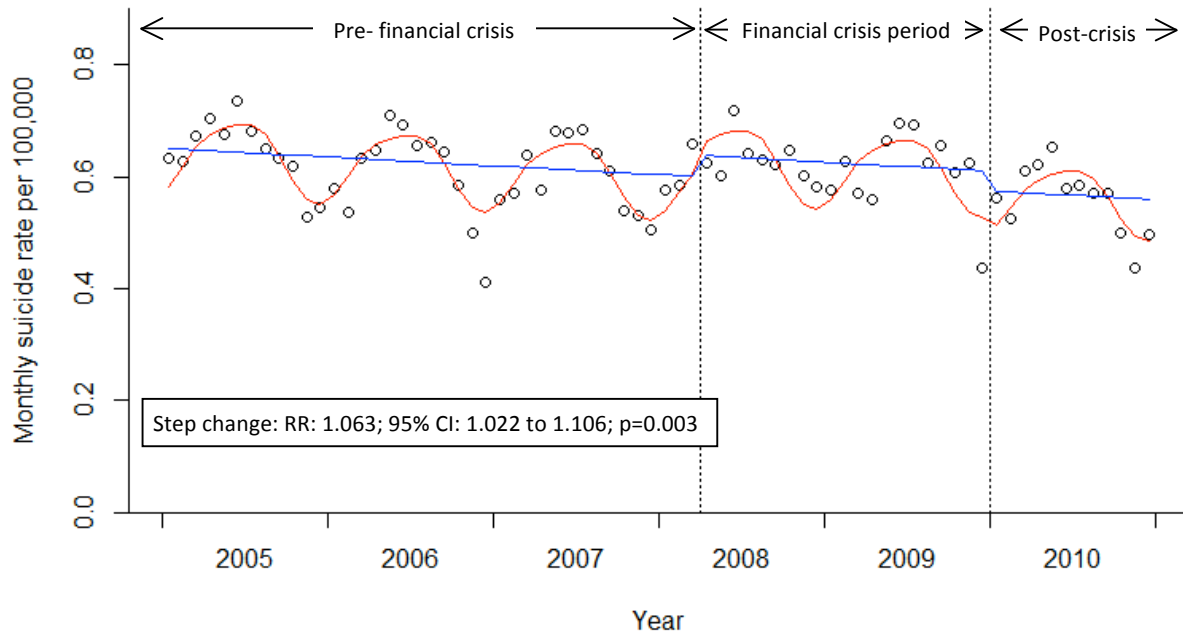


**Web Appendix 7: Time series plots of trends in monthly suicide rates for all of Spain based on the alternative models used in sensitivity analysis**

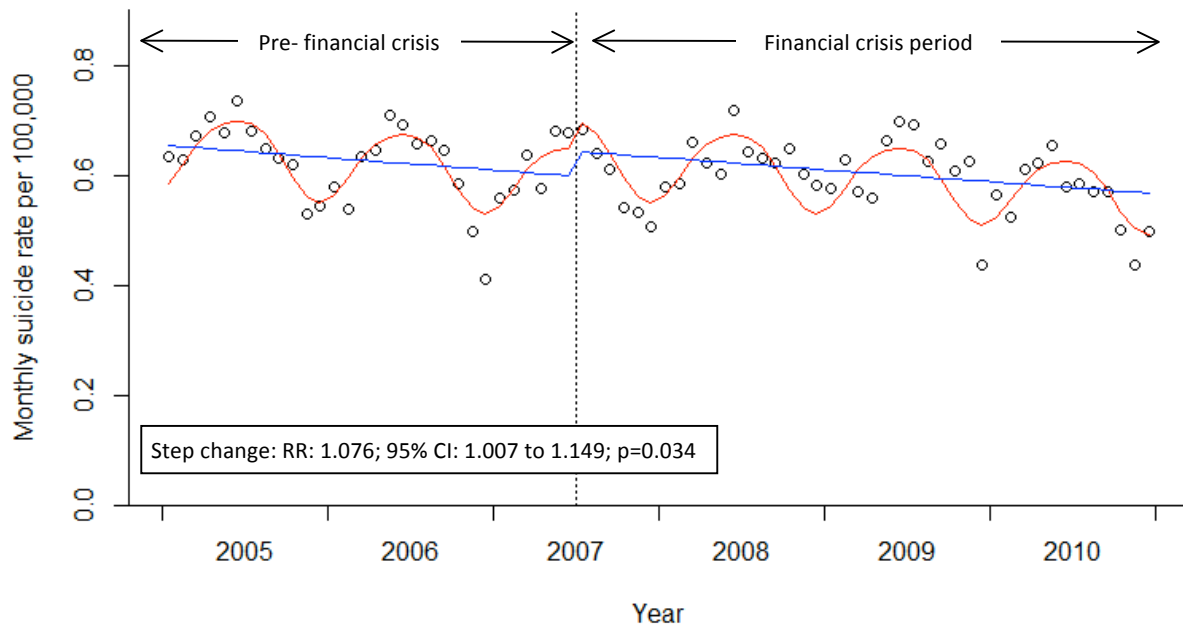
**(a) Model allowing for both a step and a slope change in the financial crisis period**



**(b) Model with the crisis period lasting only for the duration of GDP contraction (April 2008 to December 2009)**



**(c) Model with the onset of the financial crisis at the time when unemployment began to rise (July 2007)**



All models seasonally adjusted. Circles = observed rates; red line = modelled rates fitted to the data; blue line = deseasonalised trend. Vertical dotted line = onset of the financial crisis, second dotted line in (b) = end of recession period.

## Web Appendix 8: Unemployment rates during the first quarter of 2005 and the last quarter of 2010

	2005 Q1	2010 Q4	Difference
All Spain	10.2%	20.3%	10.1%
Area:			
Northern Spain	8.9%	14.3%	5.4%
Central Spain	9.6%	17.3%	7.7%
Mediterranean	10.9%	23.7%	12.9%
Sex:			
Males	7.8%	20.0%	12.2%
Females	13.6%	20.8%	7.1%
Age group*:			
16-19	39.1%	65.5%	26.4%
20-24	23.2%	36.2%	12.9%
25-54	12.3%	19.6%	7.4%
55+	8.6%	12.8%	4.2%

Unemployment rates as a percentage of the economically active population. Q1 = first quarter, Q4 = last quarter. \*Age-group divisions are different to those used in the study as these were the categories published by the Instituto Nacional de Estadística. Source: Instituto Nacional de Estadística [National Statistics Institute] †

†INE. *Instituto Nacional de Estadística [National Statistics Institute]*. [cited 2012 04/07/2012]; Available from: <http://www.ine.es/>.